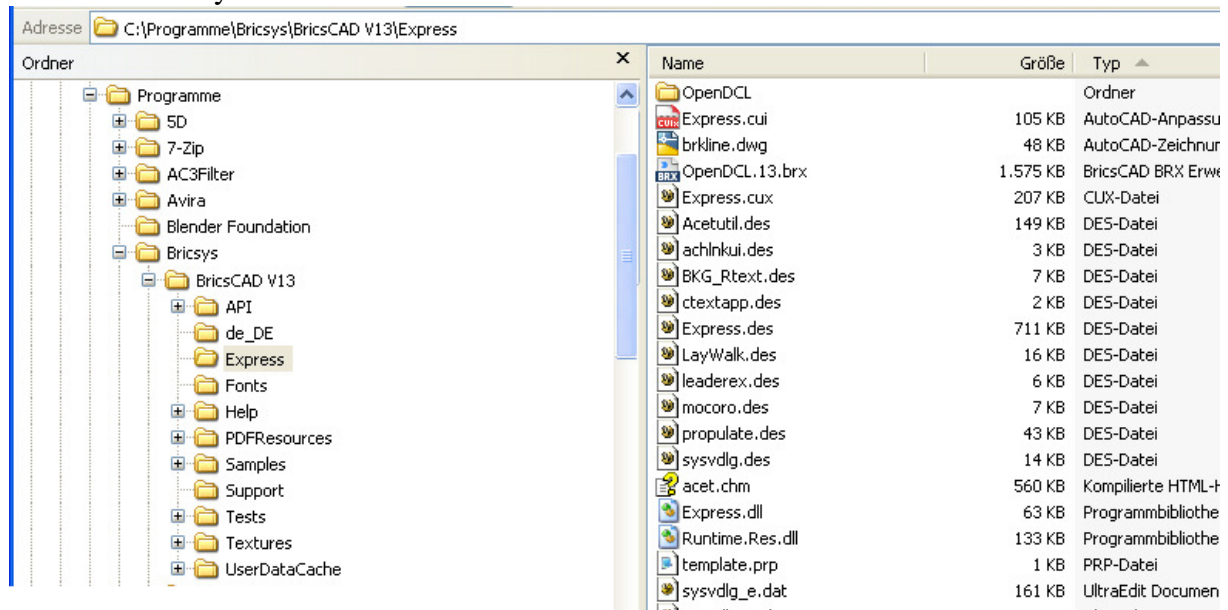
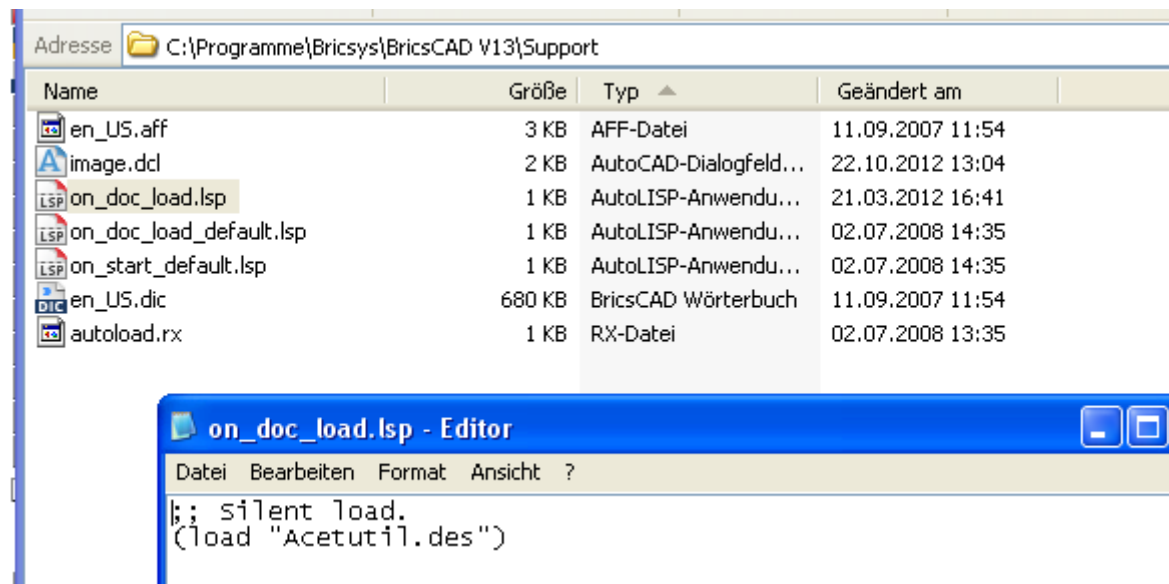


Install Notes Express Tools for Bricscad V13

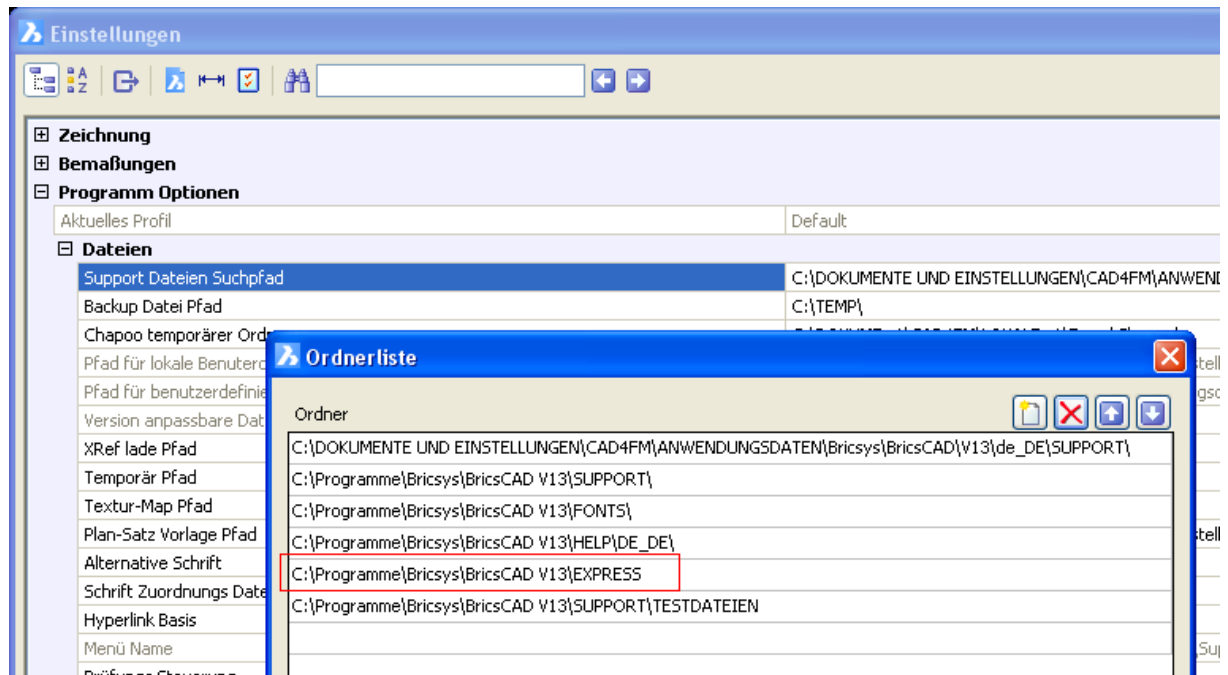
1. 1. De-pack the Zip-file. Put (place) the de-packed folder EXPRESS with all including files into the directory Bricscad V13.



2. Copy the de-packed file on_doc_load.lsp into the directory Bricscad V13\Support. In case you have created your own file on_doc_load.lsp already, open the provided on_doc_load.lsp and insert the included item at the end of the existing on_doc_load.lsp



3. Add the sub-directory EXPRESS to the list of the support (file) path.



Now, start Bricscad again – the EXPRESS tools are now available as tollboxes and pull-down menus.

READY!

Have fun with the ETools for Bricscad V13

